

COMPANY PROFILE

STEEL
DESIGN
FABRICATION
ERECTION

ניצני העמק בע"מ
החברה לצמיחת מבנים

Nitzani Ha'emek LTD
Growth Structures company



▶ ABOUT US



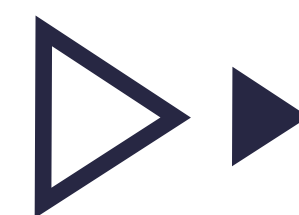
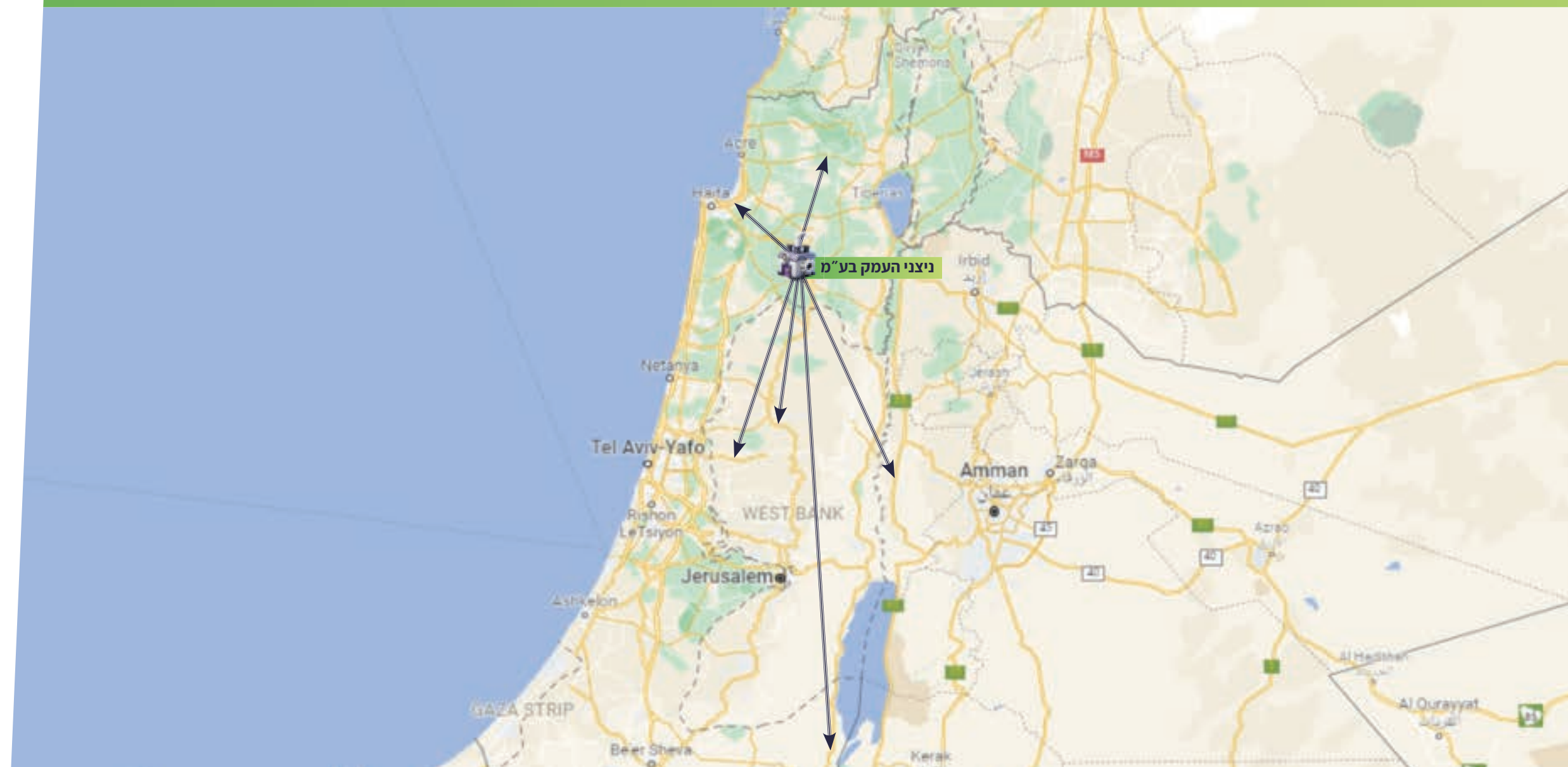
**Winner of the 2025
Building Innovation
Award**







- ▶ Nitzani Ha'emek is one of the leading Structural Steel companies in Israel with more than 26 years of experience.
- ▶ Our Fabrication Facilities located in the Mevot Gilboa industrial area near the city of Afula and equipped with modern CNC machines, our production capacity almost 1000 MT per month even we can supply more by using multi-working shifts.
- ▶ Our plant has been certified to the international standard of ISO2008:9001 and many other local standards and certificates.

OUR LOCATION



Nitzani Ha'emek LTD
Growth Structures company



	Haifa Port	40 Km
	Port of Ashdod	149 Km
	Port of Eilat	429 Km
	Sheikh Hussein - by land	45 Km
	Ben Gurion Airport	121 Km
	Haifa - Jordan Rail	7 Km



WORK PROCESS FLOW CHART



Engineering

- Complete Design
- Preparation of shop & erection drawings
- Submission & Approval
- Release of shop drg. For fabrication

Site Preparation

- Marking the anchor bolts location
- Taking the asmade after concrete casting
- Logistic Arrangement

Planning

- fabrication plan
- Erection plan
- Timing schedule

Fabrication

- Marking
- Sizing
- Fit-up
- Welding



Inspection

- Dimension
- Visual & NDT

Inspection

- Profile check post blasting
- Salt contamination test
- WFT/DFT Check
- Others

Delivery to Site

- Material Segregation
- Packing
- Loading of Materials
- Offloading at site

Installation

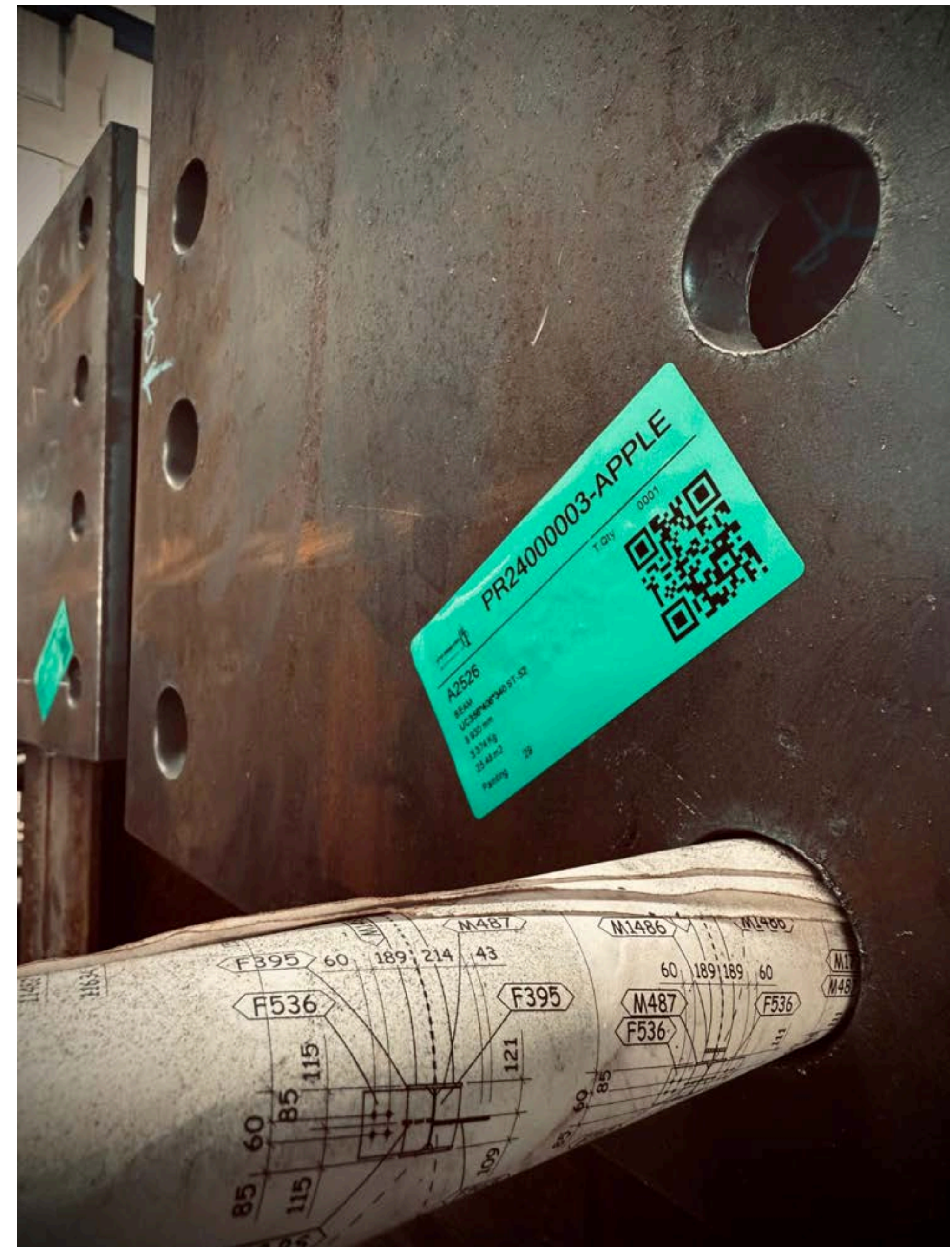
- Mobilization
- Materials Arrangement
- Lifting and Erection
- Touch up paint

Surface Treatment

- Blasting
- Painting
- Galvanizing

SMART STEEL TRACKING: FROM DESIGN TO SITE ►

Each steel beam is digitally tracked from design through production, modification, and on-site assembly. Our smart tagging system ensures real-time monitoring, seamless coordination, and full traceability throughout the entire construction process.





N-EMEK ▲ PRODUCTION FACILITIES

N-EMEK CNC MACHINERY



High-performance CNC machine for automated steel processing with dual drilling head



Advanced CNC drilling and sawing line for high-volume steel production.



Production hall featuring CNC machinery in action with overhead crane systems.

N-EMEK CNC MACHINERY

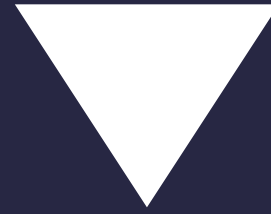


Precision CNC system equipped with modern control panels and dual-function modules



Operator monitoring CNC drilling process in a controlled work environment

OUR CERTIFICATES



משרד הביטחון
MINISTRY OF DEFENCE



Dun's 100 official members Since 2022

תעודה

וזאת לתעודה כי מערכת ניהול האיכות של

ניצני העמק פרוייקטים בע"מ

אזור התעשייה, מבואות הגלבוע

נבחנה ונסקרה ע"י מכן התקנים הישראלי-אנף איכות והסמכה ונמצאה מתאימה לרישיונות האקסן:

ת"י ISO 9001:2015

האישור חתף ל:

ביצוע עבודות בניה, מחכות ונסגרות ומכילי לחץ.

אישור ראשוני: 04/05/2017

העסקת תעודה: 14/05/2020

בוחקי עד: 03/05/2023

מס' אישור: 85076

התקף התעודה כפיף תוך מאה ועשרים ימים מיום תחילת תחילת התעודה.

מחיי את סקל עד שש אחריה מלי עד לסיום, לשעס תלקח בעד תעודה זו, הכל בהתאם לחוקי המסגרת התעודה.

התעודה היא רכוש מלי-אנף איכות והסמכה. לנדרש תוספת - סקל באמצעות מליק חסם את הבדוקי, או באמצעות האדיר www.iso.org

אנליט ויבכר
ראש אנף איכות והסמכה

ד"ר גלעד נחב
מנכ"ל






CERTIFICATE

This is to certify that the Quality Management System of

NITZANEI HA'EMEK PROJECTS LTD.

Mevohot Ha'gilboa, Israel

Has been assessed and complies with the requirements of :

ISO 9001:2015

This Certificate is Applicable to

Construction works, metal and framework and pressure vessels.

Initial Approval: 04/05/2017

Issue Date: 14/05/2020

Valid Until: 03/05/2023

Certificate No: 85076

Dr. Gidal Golub
CEO

Ariela Weinberg
Director, Quality & Certification Division








THE INTERNATIONAL CERTIFICATION NETWORK

CERTIFICATE

THE STANDARDS INSTITUTION OF ISRAEL
has issued an IQNet recognized certificate that the organization:

NITZANEI HA'EMEK PROJECTS LTD.

Mevohot Ha'gilboa, Israel

Has implemented and maintains a Quality Management System

For the following scope:

Construction works, metal and framework and pressure vessels.

which fulfils the requirement of the following standard:

ISO 9001:2015

Issued on: 14/05/2020

Date of initial approval: 04/05/2017

Date of expiration: 03/05/2023

This attestation is directly linked to the IQNet Partner's original certificate and shall not be used as a stand-alone document

Registration number: IL - 85076

Alex Stoichitov
President of IQNet

Ariela Weinberg
Director, Quality & Certification Division

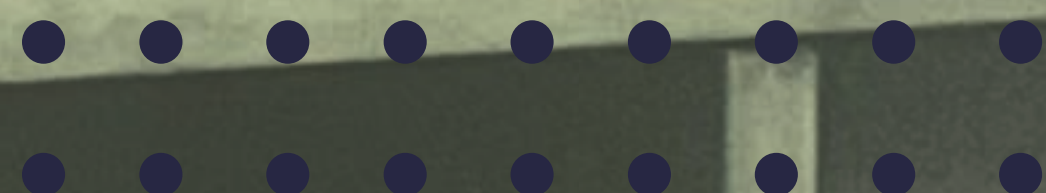
IQNet Partners*

AKISO Spain APOR Certification France APCER Portugal CCC Cyprus CISO Italy
CQC China CQM China CQR Czech Republic CQS Czech Republic DQS Holding GmbH Germany SACCS Certification Group USA
PCAV Brazil PONDORAMA Vietnam TECTEC Colombia TECTEC Scandinavia Oy Finland TECTEC Costa Rica
IRAM Argentina JQA Japan KPC Korea KIRTEC Greece MIST Hungary Hanks All Norway ISIRI Iceland
SYCE-HIGH Mexico PCBC Poland Quality Austria Austria KR Russia ISQ Israel ISQ Slovenia
IRBM QAS International Malaysia IQS Switzerland ISAS Romania TEST St Petersburg Russia TIS Turkey TVQS Serbia

* The list of IQNet partners is valid at the time of issue of this certificate. Updated information is available under www.iqnet-certification.com



OUR PROJECTS ▶





HAMENIFA SCHOOL TEL AVIV





APPLE HERZLIYA ▼



AMIRIGAN HEDERA ▼



ORANEEM OFFICE BUILDING ▼ JERUSALEM



STOCHI

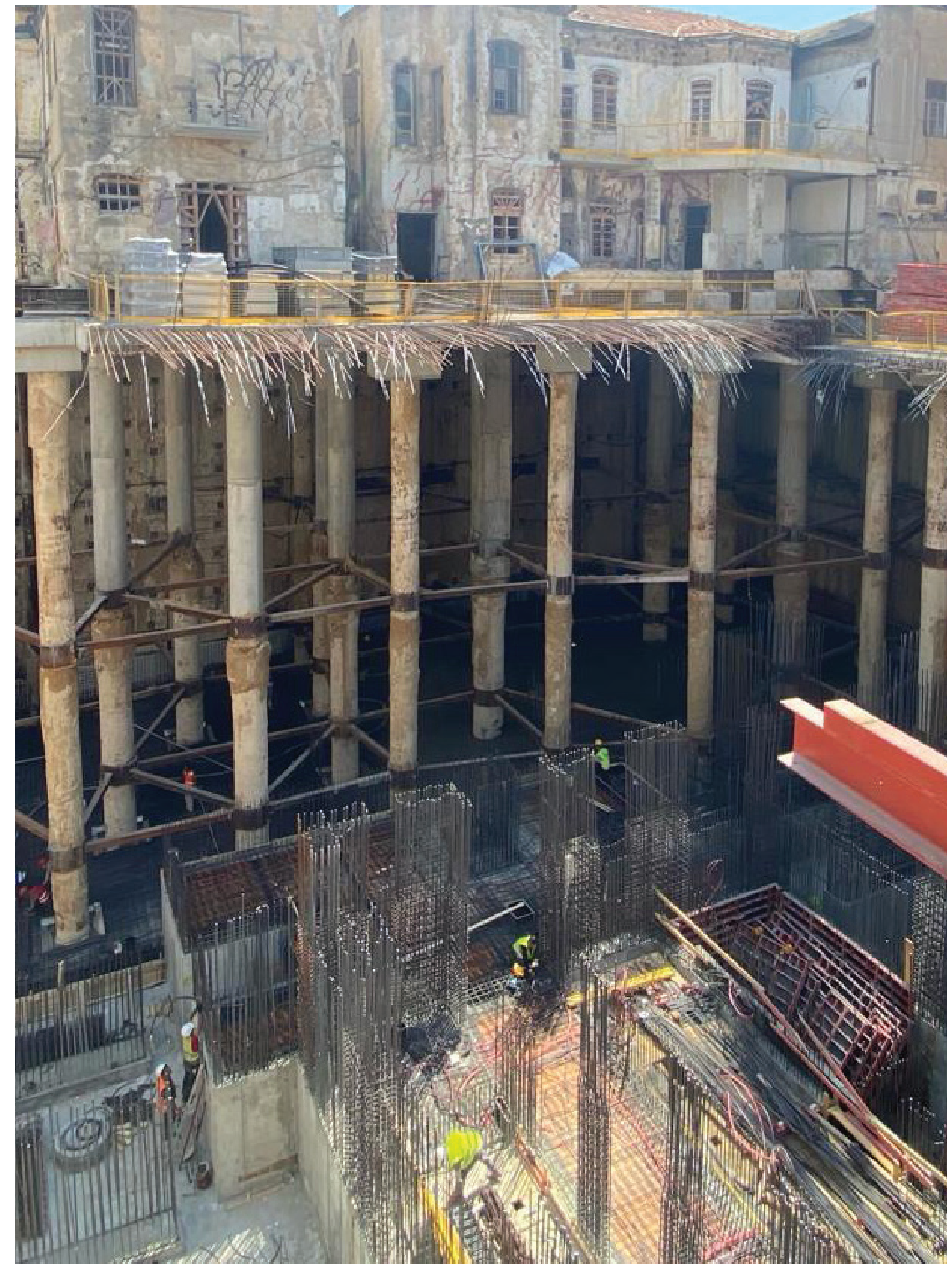




**TZEMACH
TIBERIAS**



ROTSHIELD ▲
TLV





▶
**HAEEMEK
AFULA
HOSPITAL**

MACHSHURI TNUA ▼





ECO TOWER

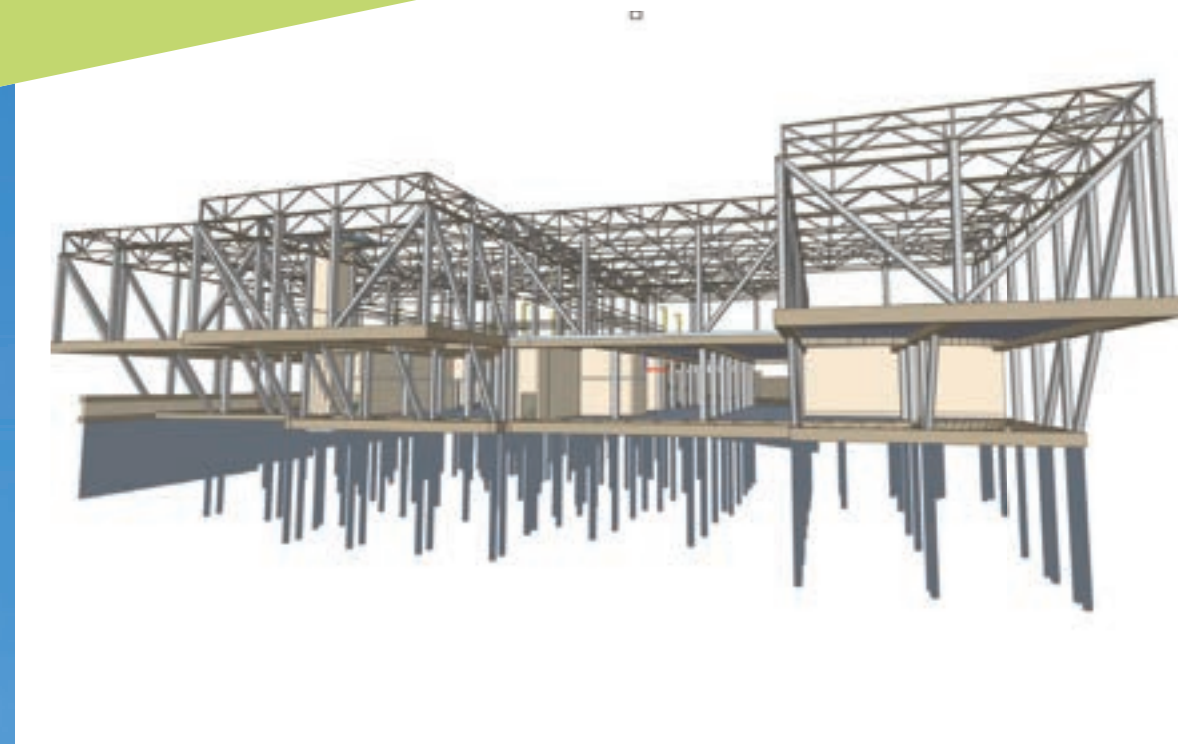
2025

◀ Winning award
the most
advanced
structure in Israel



ZICHRON YAAKOV **HOTEL** ▶

TENNISE PROJECT JERUSALEM





ADVANTAGES OF STRUCTURAL STEEL FOR ADDITIONAL ON EXISTING BUILDING ▼

- ▶ Less foundation sizes due to less loads reactions
- ▶ Light weight structure
- ▶ Can fit with any location of existing columns or supporting wall
- ▶ Many solutions for connecting with the existing concrete or steel building
- ▶ Providing more space for changing the layout
- ▶ Providing more space for adding cantilevers
- ▶ Provide wide spans
- ▶ Can fit with any architectural shape
- ▶ Faster in installation
- ▶ Sustainable material
- ▶ More flexible for any future changes



REQUIREMENTS ►

- Design loads and criteria to be considered.
- Building services that shall be constructed to be considered in the layout of the beams.
- Existing of shear walls or concrete core will be more economical and valuable for resisting the transfer loads. Accurate as made for the existing structure.
- Interface with cladding companies for connection
- with the outer cladding and the final elevations required. Proper planning for the installation steps which will affect the fabrication sequences.
- Proper logistic plan for fast installation.
- In some cases, we need to do design for erection as per the requirements and the site conditions for installation.



With deep appreciation for metalworkers
Then and now.

N.emek